



CKR-2 Polyclonal Antibody

Catalog No	YP-Ab-13179
Isotype	IgG
Reactivity	Mouse;Rat
Applications	WB;IF;ELISA
Gene Name	CCR2
Protein Name	C-C chemokine receptor type 2
Immunogen	Synthesized peptide derived from CKR-2 . at AA range: 250-330
Specificity	CKR-2 Polyclonal Antibody detects endogenous levels of CKR-2 protein.
Formulation	Liquid in PBS containing 50% glycerol, 0.5% BSA and 0.02% sodium azide.
Source	Polyclonal, Rabbit,IgG
Purification	The antibody was affinity-purified from rabbit antiserum by affinity-chromatography using epitope-specific immunogen.
Dilution	Western Blot: 1/500 - 1/2000. Immunofluorescence: 1/200 - 1/1000. ELISA: 1/5000. Not yet tested in other applications.
Concentration	1 mg/ml
Purity	≥90%
Storage Stability	-20°C/1 year
Synonyms	CCR2; CMKBR2; C-C chemokine receptor type 2; C-C CKR-2; CC-CKR-2; CCR-2; CCR2; Monocyte chemoattractant protein 1 receptor; MCP-1-R; CD antigen CD192
Observed Band	46kD
Cell Pathway	
Tissue Specificity	
Function	
Background	CCR2 (C-C Motif Chemokine Receptor 2) is a Protein Coding gene. Diseases associated with CCR2 include idiopathic anterior uveitis and cd3zeta deficiency. Among its related pathways are Signaling by GPCR and A-beta Pathways: uptake and Degradation. GO annotations related to this gene include G-protein coupled receptor activity and chemokine receptor activity. An important paralog of this gene is CCR9. eceptor for the CCL2, CCL7 and CCL13 chemokines. Transduces a signal by increasing intracellular calcium ion levels. Alternative coreceptor with CD4 for HIV-1 infection. hemokine CC receptors (CCRs) predominantly recognize CC chemokines. CC chemokines are distinguished by having four conserved cysteines, with the first two cysteines being adjacent to each other. There are 10 chemokine CC receptors.

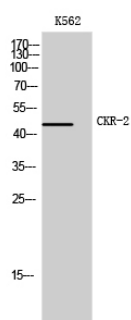
matters needing attention

Avoid repeated freezing and thawing!

Usage suggestions

This product can be used in immunological reaction related experiments. For more information, please consult technical personnel.

Products Images



Western Blot analysis of K562 cells using CKR-2 Polyclonal Antibody